

### 2018 Budget Change

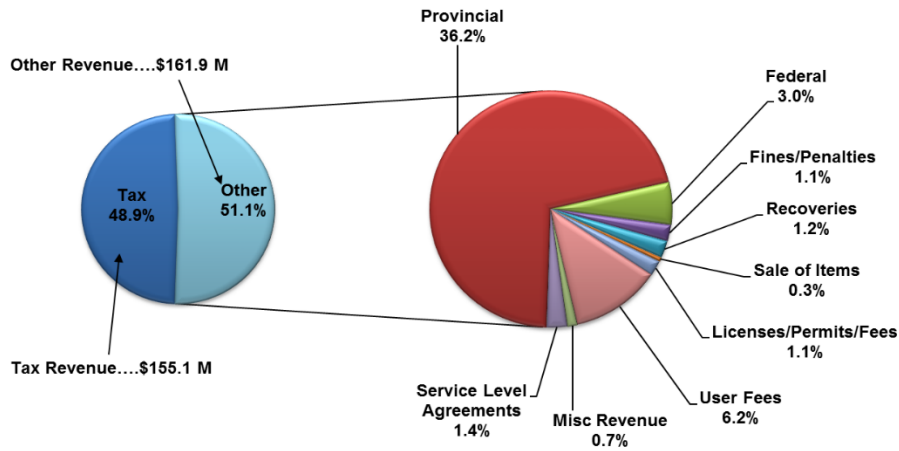
Municipal Operations:	<u>Tabled</u>	<u>Approved</u>
Municipal Departments	1.06%	0.41%
Provincial Bill 148	0.37%	0.37%
Police Services	<u>0.37%</u>	<u>0.37%</u>
	1.80%	1.15%
<b>Infrastructure Renewal:</b>		
Provincial Asset Mgmt. Plan Requirement	<u>0.47%</u>	<u>0.47%</u>
<b>Net Tax Impact %</b>	<b><u>2.27%</u></b>	<b><u>1.62%</u></b>

### 2018 Municipal Taxes for a Typical Residence

Municipal portion	\$2,835
Education portion	280
<b>Total Taxes</b>	<b><u>\$3,115</u></b>

### 2018 Revenue Breakdown

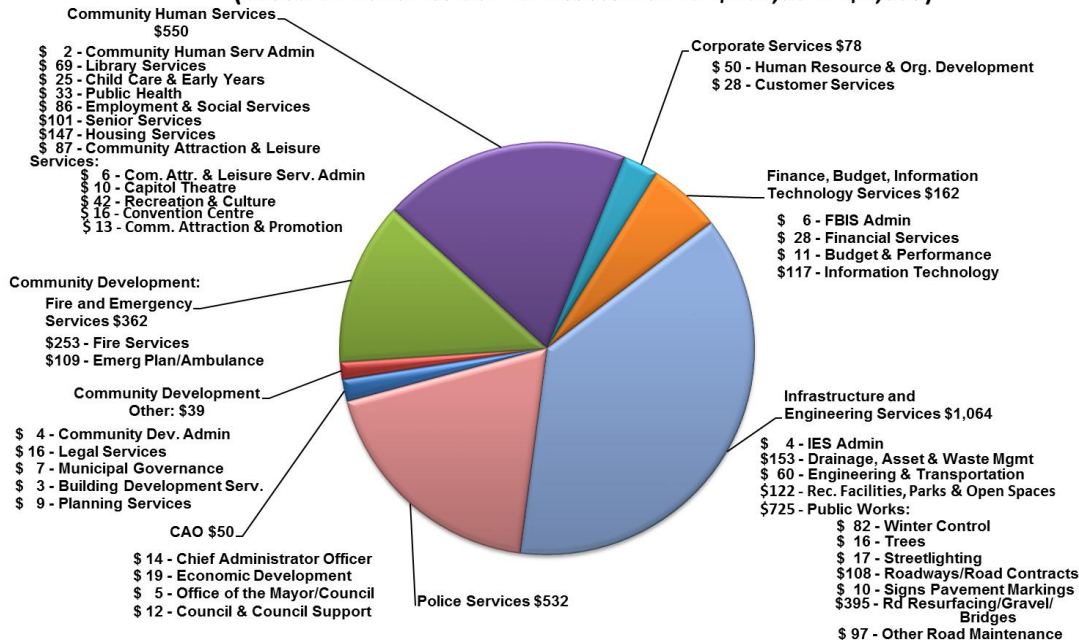
Total ..... \$317,023,956



Data Source: 2018 Approved Base Budget

### 2018 Avg Household Contribution to Municipal Services

(based on 2018 Residential Assessment of \$164,984 = \$2,835)



Data Source: 2018 Approved Base Budget (excludes Education portion)

Visit our [CK website at www.chatham-kent.ca](http://www.chatham-kent.ca) for more detailed information on service costs

