



COMMUNITY CONTEXT

2011-2016
Population Change

CK -2%



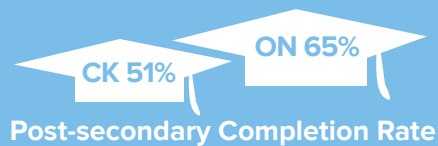
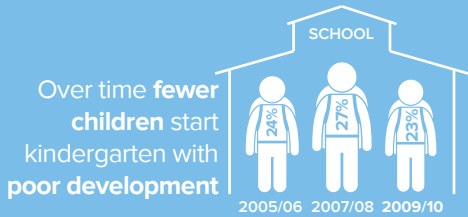
ON +4.6%

A higher % of seniors live in CK
Since 2011, there has been an 3% increase

CK 21.1%

ON 16.7%

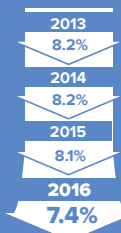
LEARNING & EDUCATION



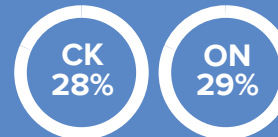
Eligible children have the Canada Learning Bond

WORK & ECONOMY

Unemployment rate in CK is decreasing



3 of 5 people (age 15+) are currently in the labour force



Fewer people in CK feel they have workplace stress

HEALTHY POPULATION



1 out of 3 people eat fruits or vegetables 5 or more times a day (ON 39%)



Over half of people in CK are not active every day (ON 55%)



3 of 5 people are overweight (ON 52%)

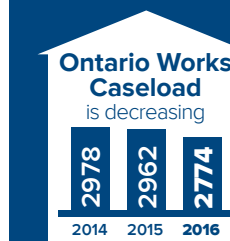
Fewer people in CK report their life as being stressful



HOUSEHOLD FINANCES



Ontario \$30,641
Median personal income, after taxes \$28,426



CK 8%

Households experience food insecurity (ON 9%)

CK COUNTS: 2016 Snapshot of Quality of Life in Chatham-Kent.

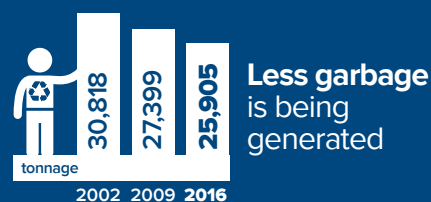
Measuring what's important where we live, learn, work and play!

For more information visit www.ckcounts.ca

Infographic reflects the most recent data available as of September 18, 2017



ENVIRONMENT



45% increase in e-waste diverted from landfills 2014-2016



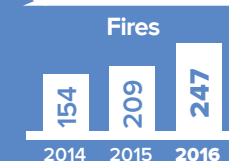
COMMUNITY BELONGING

93% of people are satisfied with their general life (ON 91%)



Median charitable donation went up to \$360 in 2015 from \$350 in 2014 (ON \$360 in 2015)

SAFETY



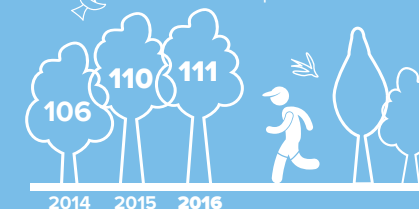
CK-EMS Paramedics attended to the medical needs of 12,429 citizens

LEISURE & CULTURE

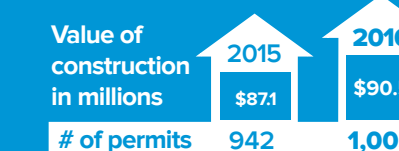
In 2016, people accessed low-cost/no-cost recreation opportunities 83,916 times



Kilometers of walking trails (pathways within parks and trails)



HOUSING



of permits 942 1,003

