

# ESSEX, CHATHAM-KENT GROUNDWATER STUDY

- Legend
- Water Table (masl)**
- 174 - 175
  - 176 - 180
  - 181 - 185
  - 186 - 190
  - 191 - 195
  - 196 - 200
  - 201 - 205
  - 206 - 210
  - 211 - 215
  - 216 - 220
  - 221 - 225
  - 226 - 230
  - 10m Contour

## WATER TABLE

Note:  
The information conveyed by this map is regional in nature and is not suited for the use in site specific evaluations. Map should only be interpreted in conjunction with accompanying written report.

Digital Mapping Sources:  
Base Mapping Features - Ministry of the Environment  
Water Well Information - Ministry of the Environment

© 2003 Queen's Printer For Ontario

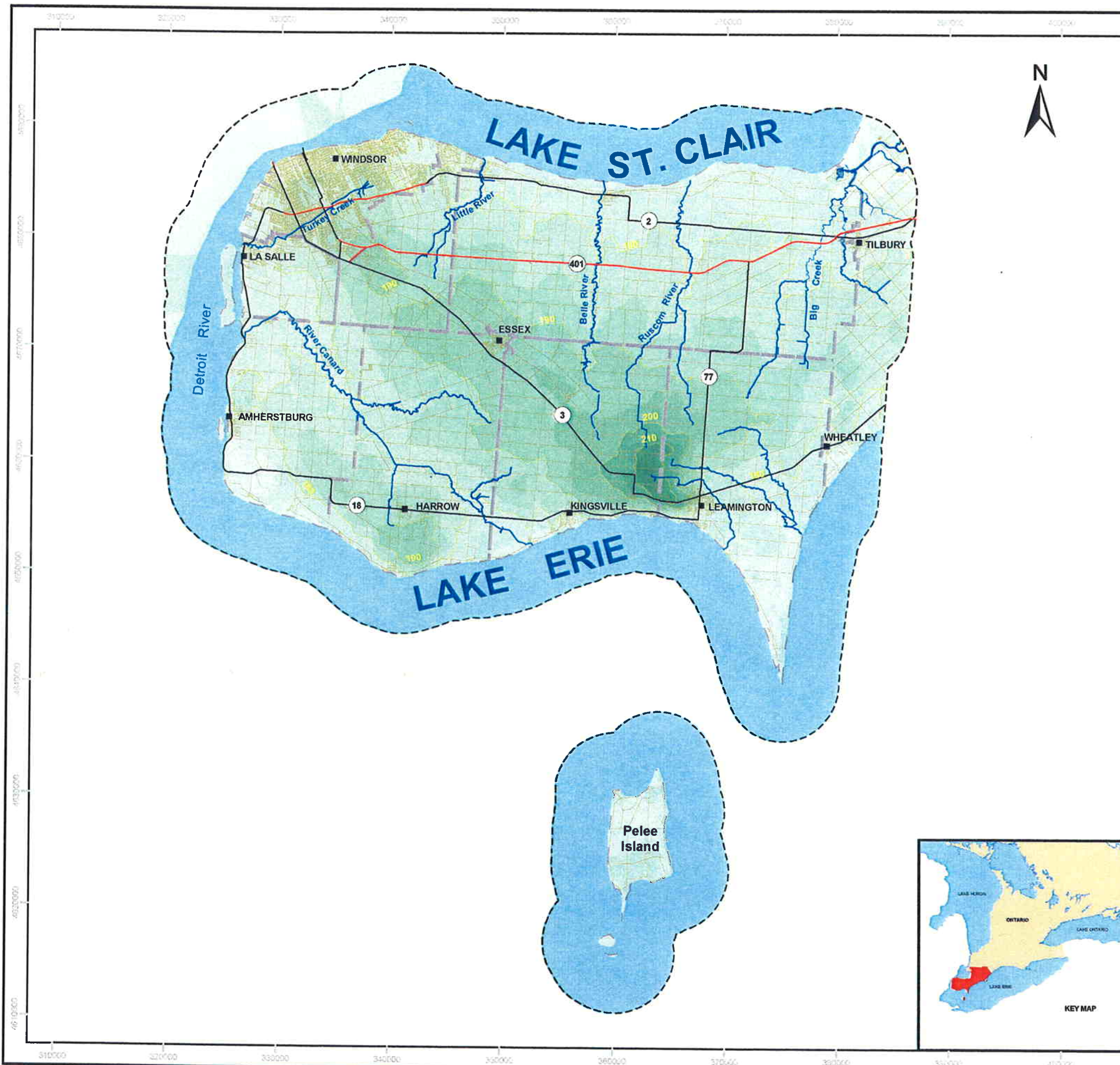


1:350 000

14A

JANUARY 2004

Projection: UTM NAD83 ZONE 17





# ESSEX, CHATHAM-KENT GROUNDWATER STUDY

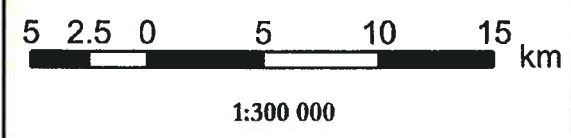
- Legend
- Water Table (masl)**
- 174 - 175
  - 176 - 180
  - 181 - 185
  - 186 - 190
  - 191 - 195
  - 196 - 200
  - 201 - 205
  - 206 - 210
  - 211 - 215
  - 216 - 220
  - 221 - 225
  - 226 - 230
  - 10m Contour

## WATER TABLE

Note:  
The information conveyed by this map is regional in nature and is not suited for the use in site specific evaluations. Map should only be interpreted in conjunction with accompanying written report.

Digital Mapping Sources:  
Base Mapping Features - Ministry of the Environment  
Water Well Information - Ministry of the Environment

© 2003 Queen's Printer For Ontario



**14B**  
JANUARY 2004



Projection: UTM NAD83 ZONE 17